

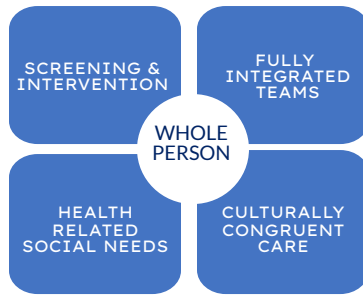


HB22-1302 Health Care Practice Transformation

Behavioral Health Integration Support

There is no one-size-fits-all solution when it comes to integration of behavioral health care. Successful models must vary based on resources and population needs.

Meeting the behavioral health needs of a diverse patient population requires recognizing and addressing substance use disorder (SUD), chronic pain, trauma and adverse childhood experiences, and severe mental illness (SMI).



This requires aligned workflows, policies, business models, culture, and norms.

We have worked on federal, and state projects such as Colorado State Innovation Model, Comprehensive Primary Care (CPC) Initiative, and CPC Plus, to name a few, to achieve these goals.

Our team works with organizations to overcome the challenges of integrating the foundations of prevention, identification, and treatment of behavioral health into practice. We offer:

- Practice Facilitation & Coaching
- Population Health Workforce Development
- Clinical Health Coach® Training
- Stigma & Health Equity Consultation

HealthTeamWorks is offering **free support** to co-design a model to meet your patients' behavioral health needs as required for funding under HB22-1302.

HB22-1302 Funding Opportunity Timeline

The Colorado Department of Health Care Policy and Financing (HCPF) is offering grant funding through HB22-1302 for primary care, OB/GYN, and behavioral health care providers looking to implement or expand access to care and treatment for mental health and substance use disorders using an evidence-based integrated care model.

